

Hollywood Mystique Trend Tips

Be on-trend with these new and fun Mary Kay® products. Plus, easy expert how-to tips help you create multiple looks.



Limited-Edition†
Mary Kay® Nail
Lacquer

Limited-Edition†
Mary Kay® Bold
Shine Lip Color

Limited-Edition†
Mary Kay® Eye Intrigue
Color Quad
Compact not included.

Limited-Edition†
Mary Kay® Gel Eyeliner
With Expandable Brush

Try Cranberry.
It's a plum shade (3)
that's matte for modern
sophistication.



All you need to play a starlet at home begins with these expert tips from global makeup artist Ildiko Juhasz.

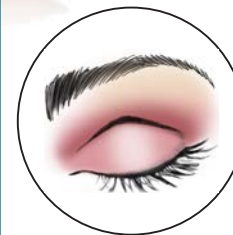
Wear Eye Color Your Way



Simple sophistication with one shade:
Wear the soft pink shade (2) over eyelid from lashline to brow bone. Pair with black eyeliner and mascara.



Added luxury with two shades:
Add the cranberry shade (3) to the eye crease.



Add a touch of texture with three shades:
Add the neutral shade (1) to the brow bone.



Ultimate glamour with all four shades:
Apply the darkest shade (4) as an eyeliner along lashlines.

FREE
expandable
brush with
gel eyeliner

MARY KAY

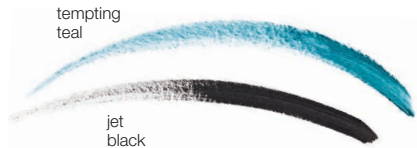
†Available while supplies last

Trend Makeup Made Easy

Gel Eyeliner Tips

- Perfect your mineral eye color look **FIRST** and then apply gel eyeliner.
- If you don't want to feel too made up, keep the rest of your look neutral.
- If applying gel eyeliner feels advanced, try applying it to half your lashline and then to the other half – instead of one precise application.

Try Teal.
It's a very feminine color that helps brighten the eye area. It's universally flattering for any eye color.



Limited-Edition[†] Mary Kay[®] Gel Eyeliner With Expandable Brush

Lip Tips

- Wear over **Clear lip liner** or a complementary shade applied along natural lip line.
- Wear over lipstick. See fun shade combinations to try in the circle at right.
- Layer lip liner, lipstick and limited-edition[†] Bold Shine Lip Color for a full-glamour lip look.



Limited-Edition[†] Mary Kay[®] Bold Shine Lip Color

Fun Lipstick Color Pairings

- Apply **limited-edition[†] Mary Kay[®] Bold Shine Lip Color** in **Poised Pink** over **Pink Passion lipstick**.
- Apply **limited-edition[†] Mary Kay[®] Bold Shine Lip Color** in **Radiant Red** over **Really Red lipstick**.

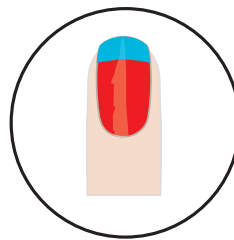
Nail Color Three Ways



- Dab the brush in eyeliner and wipe excess on a tissue before you begin.
- Close the eye and gently pull taut.
- Apply eyeliner in short dashes that connect.

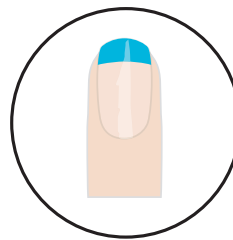


- For an evening-appropriate "cat's-eye" effect, draw a thicker line across lashline.
- Stop at the outer corner of the eye and tip the brush at a 45-degree angle to draw the line just past your outer eye.



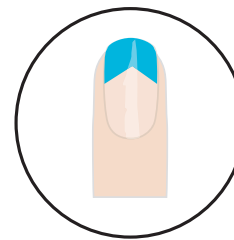
TWO-TONED

Apply nail lacquer in one shade over entire nail and just the tips in a second shade for a fun two-toned look.



FUN TIPS

Apply nail lacquer to just the tips for a funky French manicure.



STILETTO TIPS

For a twist on tips, apply nail lacquer at an angle to create the illusion of a stiletto-pointed tip.



Limited-Edition[†] Mary Kay[®] Nail Lacquer

Starting just below the outside edge of the tip, swipe the brush upward, at an angle, toward the center. Repeat on the other side.