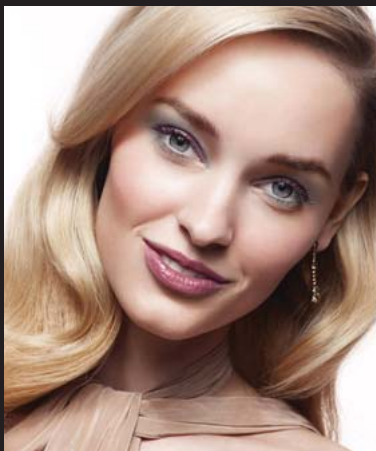
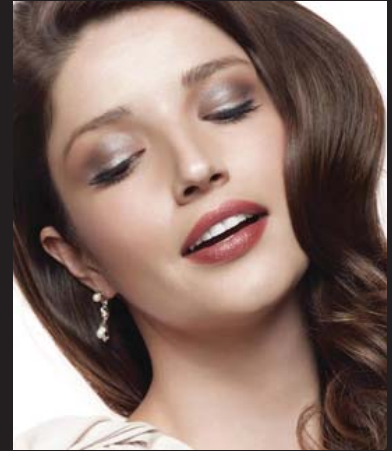


# *Women in Business* Professional Portfolio



## Contents

- |                                |                           |
|--------------------------------|---------------------------|
| 1-The Casual Look              | 7-The Vibrant Beauty Look |
| 2-The Every Day Look           | 8-Neutrals                |
| 3-The Glamorous Anytime Look   | 9-Berries                 |
| 4-The Glowing Skin Look        | 10-Tawnies                |
| 5-The Party Look               | 11-Chocolates             |
| 6-The Special Celebration look | 12-Information Sheet      |

# The Casual Look

A simple but sophisticated look that's relaxed without seeming underdone



Name \_\_\_\_\_

Occupation \_\_\_\_\_

Skin Type

combination ~ oily ~ dry

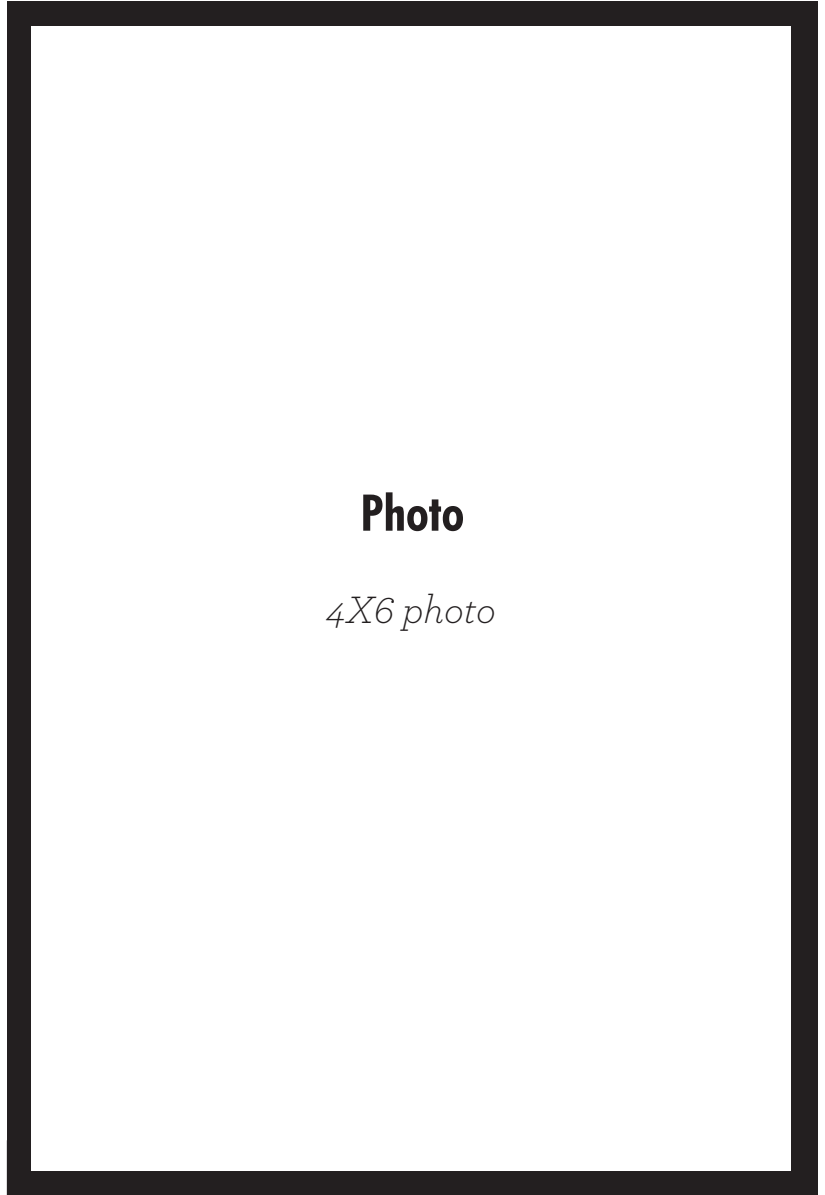
Favorite Mary Kay Products

---

---

---

---



**Photo**

*4X6 photo*

## Get this look

Beach Blonde cream eye color

Hazelnut mineral eye color

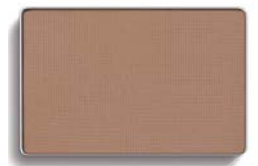
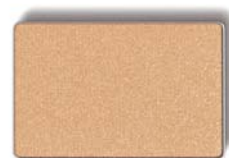
Honey Spice mineral eye

Bronze Eyeliner

Mary Kay® Lash Love® Mascara in I Love Black

Shy Blush mineral cheek color

True Dimensions™ Lipstick in Color Me Coral



# The Every Day Look

Neutrals & simple styling make this a beautiful choice.



Name \_\_\_\_\_

Occupation \_\_\_\_\_

Skin Type

combination ~ oily ~ dry

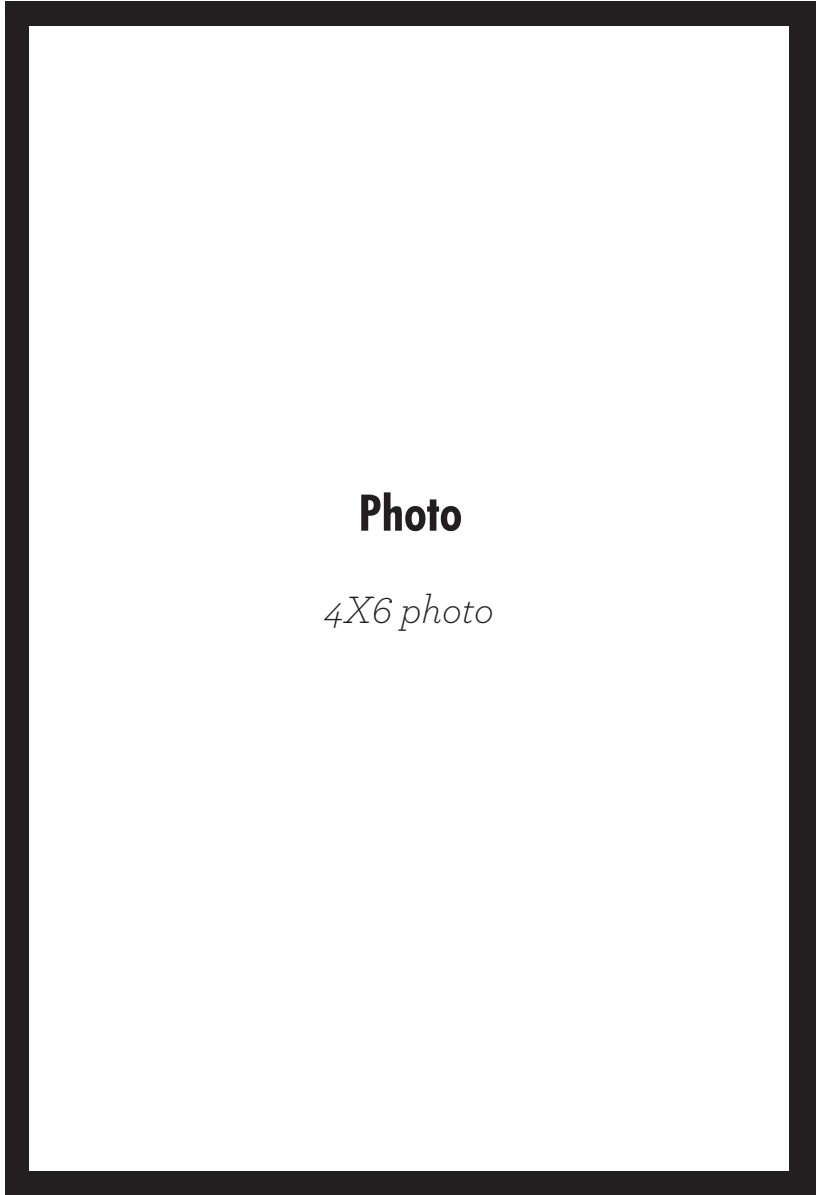
Favorite Mary Kay Products

---

---

---

---



Photo

4X6 photo

## Get this look

Amber Blaze mineral eye color

Espresso mineral eye color

Golden Vanilla mineral eye color

Deep Brown eyeliner

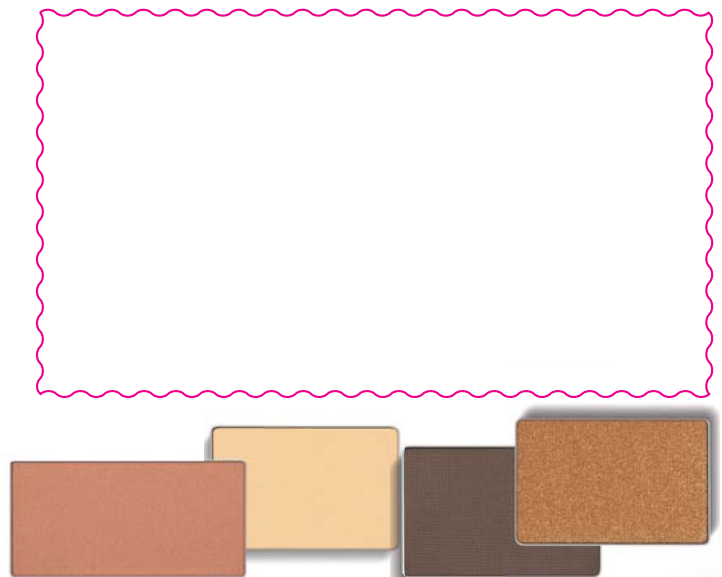
Mary Kay® Ultimate Mascara™ in Black/Brown

Sparkling Cider mineral cheek color

Neutral lip liner

True Dimensions™ Lipstick in Natural Beauté

Pink Sateen lip gloss.



# The Glamorous Anytime Look

Smokey eyes and luminous skin make this an alluring look for glamorous occasions.



Name \_\_\_\_\_

Occupation \_\_\_\_\_

Skin Type

combination ~ oily ~ dry

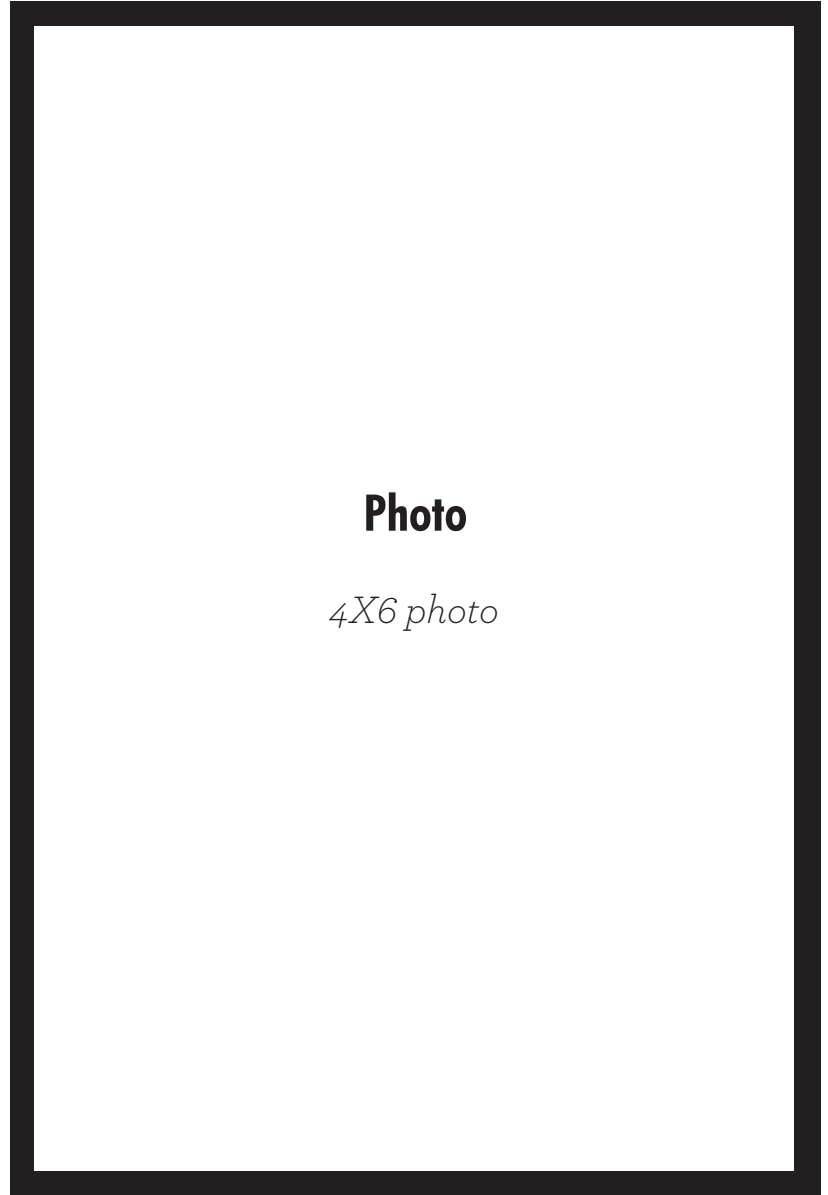
Favorite Mary Kay Products

---

---

---

---



Photo

4X6 photo

## Get this look

- Granite mineral eye color
- Midnight Star mineral eye color
- Honey Spice mineral eye color
- Black eyeliner
- Lash Love® Mascara in I love Black
- Sweep Cherry Blossom mineral cheek color
- Amber Suede creme lipstick
- Café au Lait lip gloss



# The Glowing Skin Look

Subdued Shades create a fresh luminous look.



Name \_\_\_\_\_

Occupation \_\_\_\_\_

Skin Type

combination ~ oily ~ dry

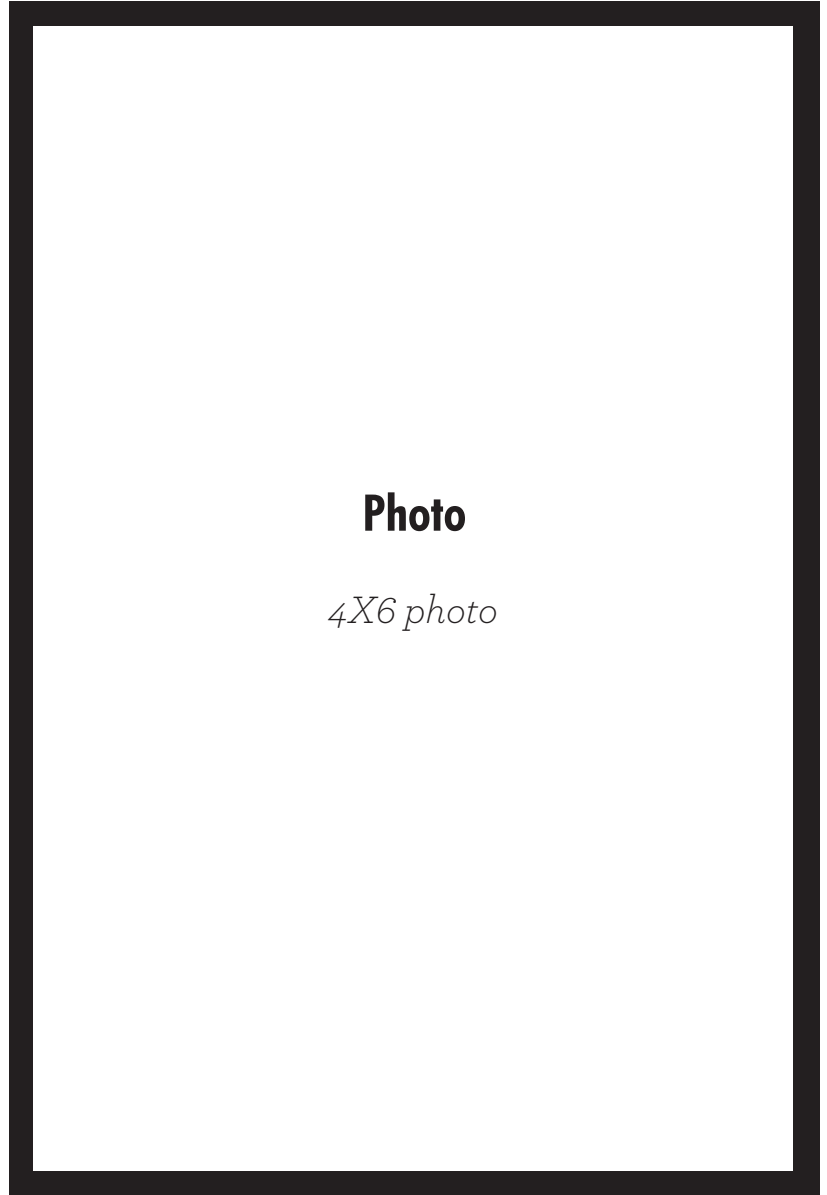
Favorite Mary Kay Products

---

---

---

---



Photo

4X6 photo

## Get this look

Beach Blonde cream eye color

Soft Black brow definer pencil

Mary Kay® Lash Love® Mascara in I Love Black

mineral highlighting powder in Pink Stardust

Fancy Nancy lip gloss





# The Party Look

Make your party makeup pop with the ideal bold lip and pair it with a glamorous smokey eye.



Name \_\_\_\_\_

Occupation \_\_\_\_\_

Skin Type

combination ~ oily ~ dry

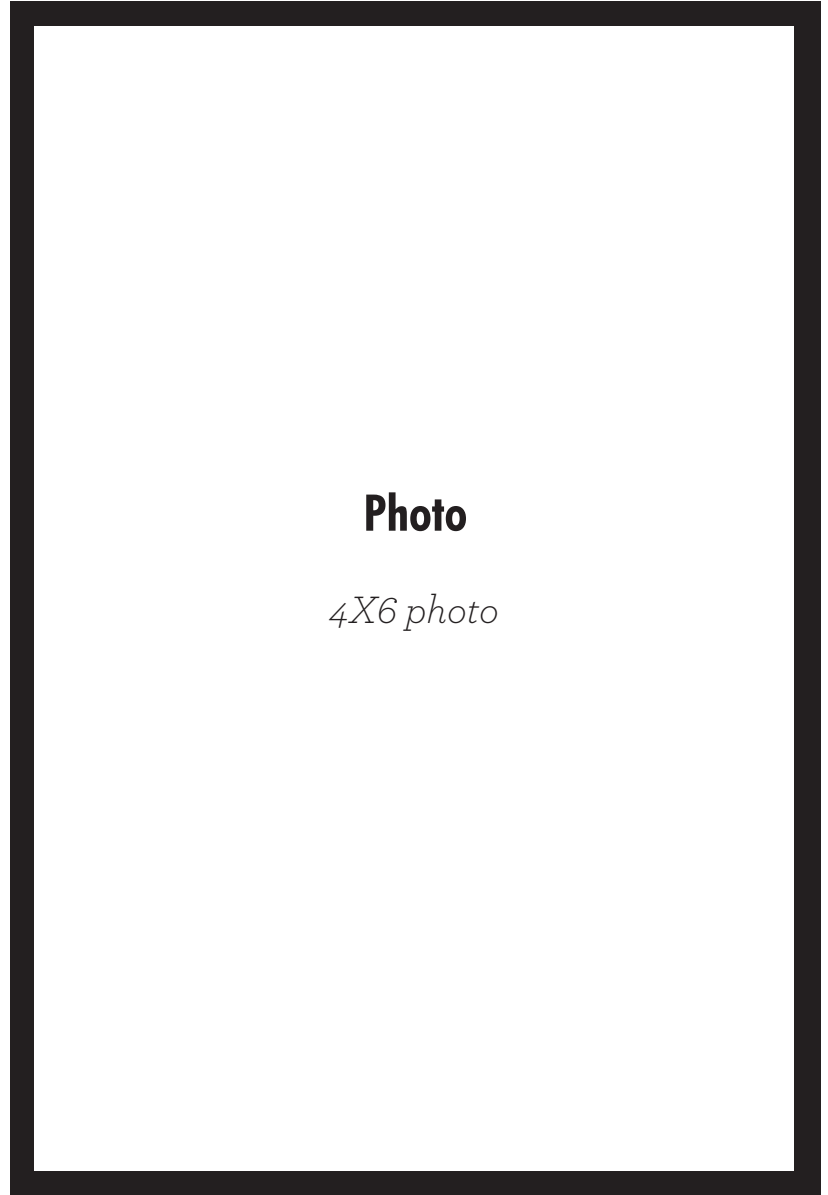
Favorite Mary Kay Products

---

---

---

---



Photo

4X6 photo

## Get this look

Truffle mineral eye color

Silver Satin mineral eye color

Gold Coast mineral eye color

Black liquid eyeliner

Silver Satin mineral eye color

Mary Kay® Lash Love® Mascara in I love Black

Sunny Spice mineral cheek color

True Dimensions™ Lipstick in Firecracker

Rock 'n' Red lip gloss



# The Special Celebration Look

Head to the events of the season looking simply stunning in shades of dusky purples accented by luscious lips.



Name \_\_\_\_\_

Occupation \_\_\_\_\_

Skin Type

combination ~ oily ~ dry

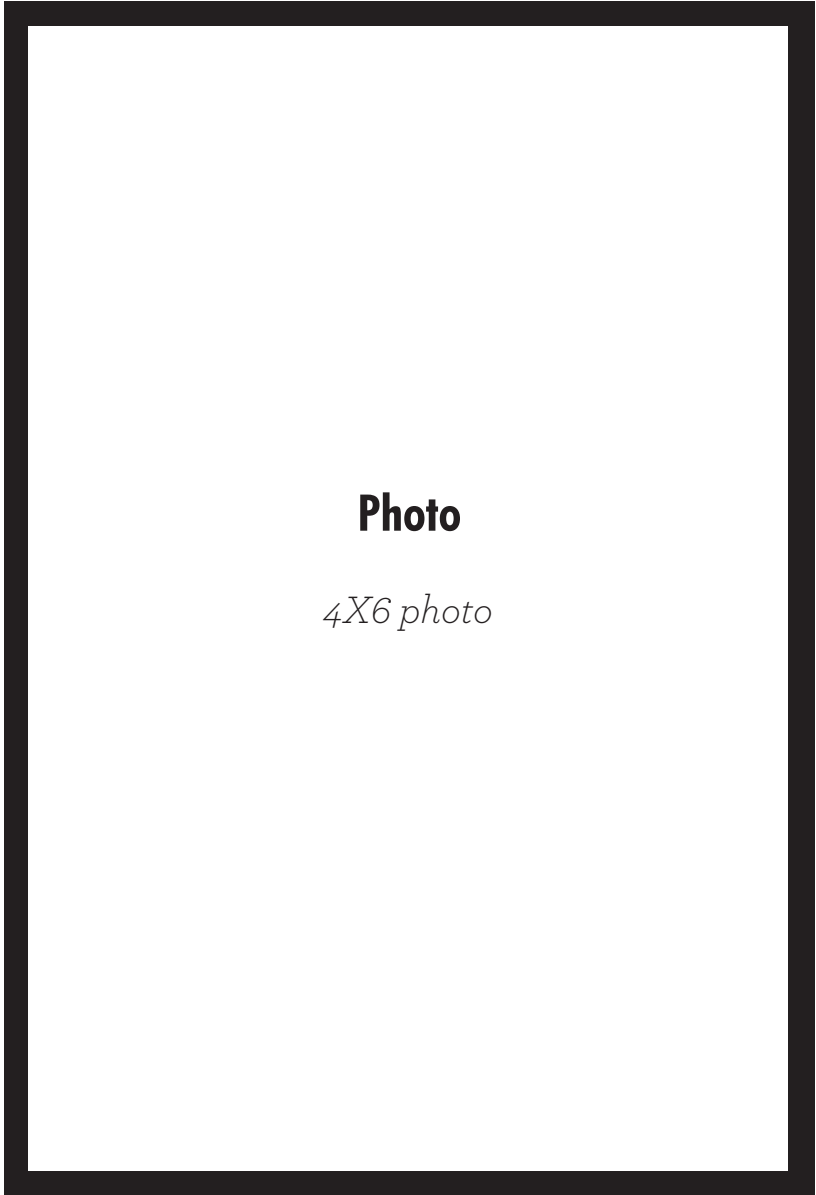
Favorite Mary Kay Products

---

---

---

---



**Photo**

*4X6 photo*

## Get this look

- Honey Spice mineral eye color
- Truffle mineral eye color
- Sweet Plum mineral eye color
- Black eyeliner
- Ultimate Mascara™ in Black
- Dark Cherry mineral cheek color
- Fuchsia creme lipstick



# The Vibrant Beauty Look

Eyes are vibrant and playful, while cheeks are radiant looking with a warm glow



Name \_\_\_\_\_

Occupation \_\_\_\_\_

Skin Type

combination ~ oily ~ dry

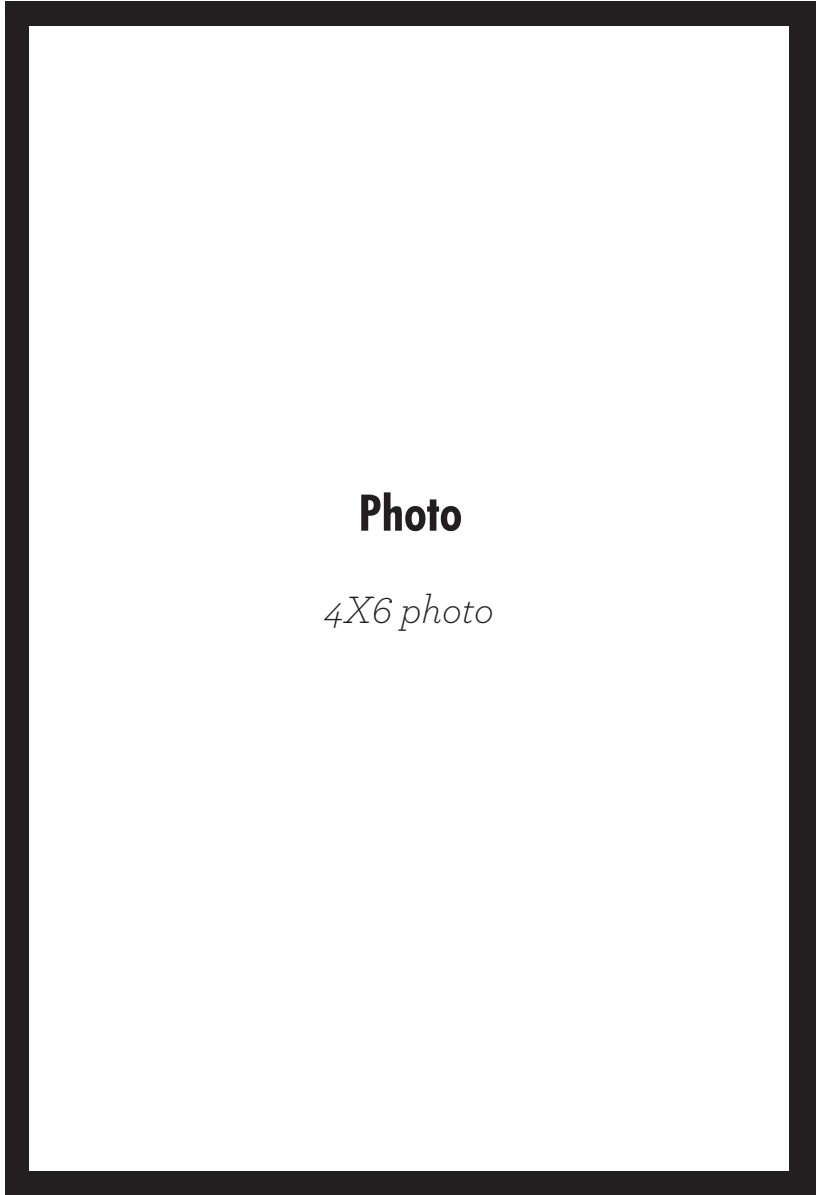
Favorite Mary Kay Products

---

---

---

---



**Photo**

*4X6 photo*

## Get this look

Sweet Cream mineral eye color



Silver Satin mineral eye color

Sweet Plum mineral eye color

Mary Kay® Lash Love® Mascara in I love Black

Cherry Blossom mineral cheek color

True Dimensions™ Lipstick in Mystic Plum





# Color Card- Neutrals

Name \_\_\_\_\_

Occupation \_\_\_\_\_

**Skin Type**

**combination ~ oily ~ dry**

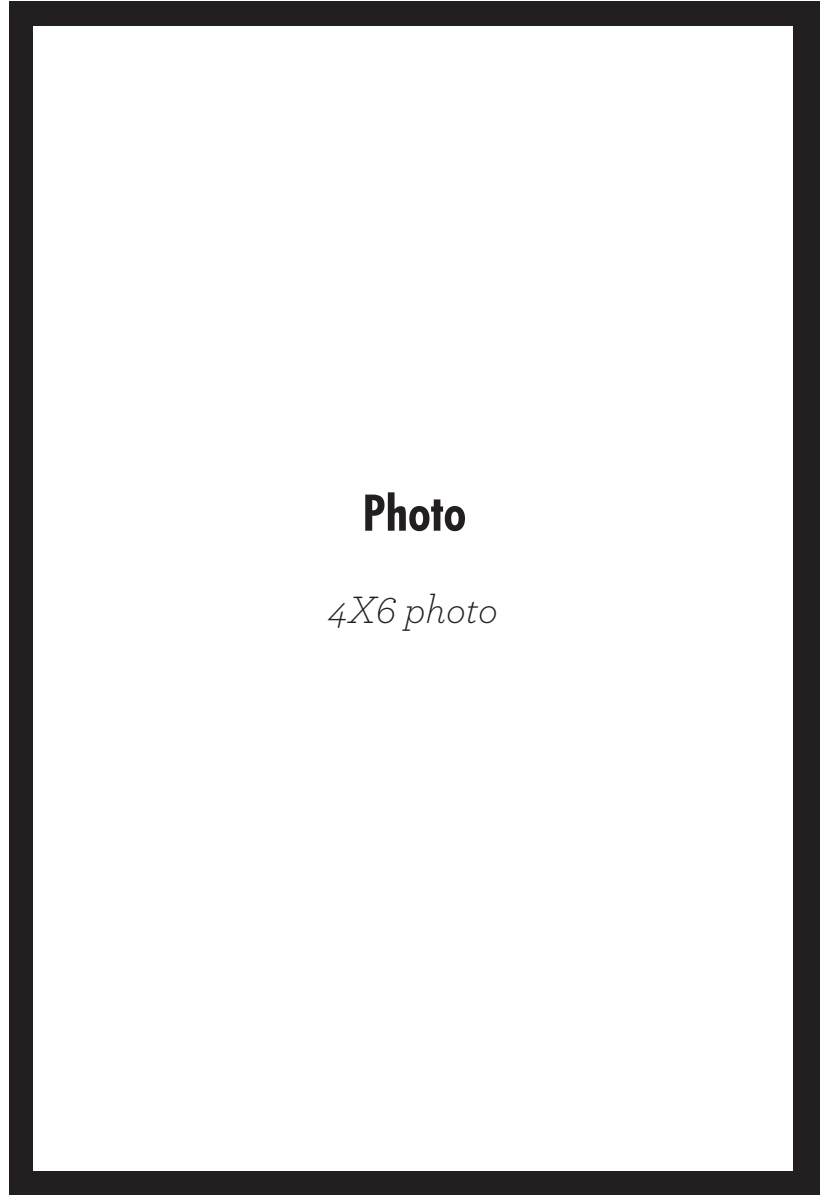
**Favorite Mary Kay Products**

---

---

---

---



## Get this look

Silky Caramel Mineral eye color

Precious Pink Mineral eye color

Iris Mineral eye color

Strawberry Cream Mineral cheek color

Maple Crème Lipstick

**Optional Additions:** Neutral lip liner and Cream and Sugar lip gloss, Violet Ink Eyeliner



# Color Card- Berries

Name \_\_\_\_\_

Occupation \_\_\_\_\_

**Skin Type**

combination ~ oily ~ dry

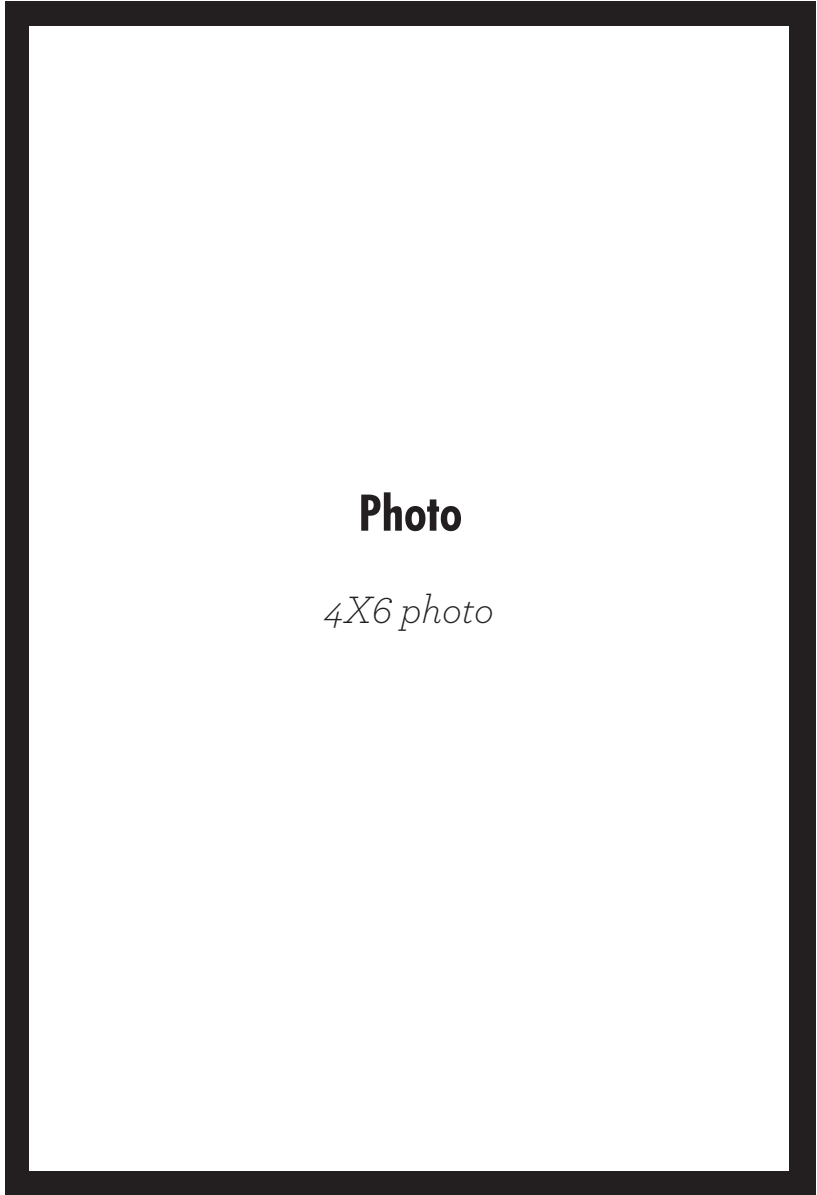
**Favorite Mary Kay Products**

---

---

---

---



## Get this look

Moonstone Mineral Eye Color

Silver Satin Mineral Eye Color

Sweet Plum Mineral Eye Color

Bold Berry Mineral Cheek Color

Whipped Berries Crème Lipstick

**Optional Additions:** Plum Lip Liner and

Pink Luster Lip Gloss, Black eyeliner



# Color Card- Tawnies

Name \_\_\_\_\_

Occupation \_\_\_\_\_

**Skin Type**

combination ~ oily ~ dry

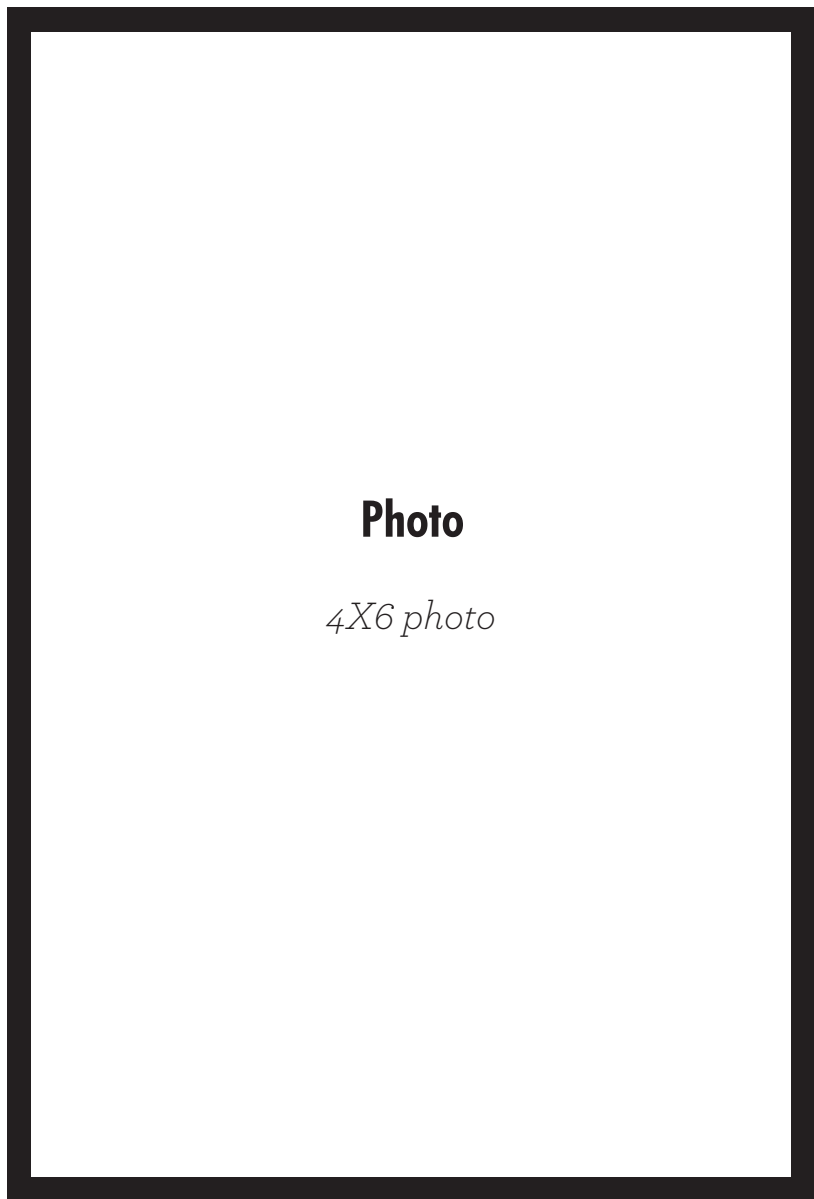
**Favorite Mary Kay Products**

---

---

---

---



## Get this look

Sweet Cream Mineral eye color

Sienna Mineral eye color

Granite Mineral eye color

Shy Blush Mineral Cheek Color

Sweet Nectar Crème Lipstick

**Optional Additions:** Spiced Tea lip liner and

Fancy Nancy lip gloss, Steely eyeliner



# Color Card- Chocolates

Name \_\_\_\_\_

Occupation \_\_\_\_\_

**Skin Type**

combination ~ oily ~ dry

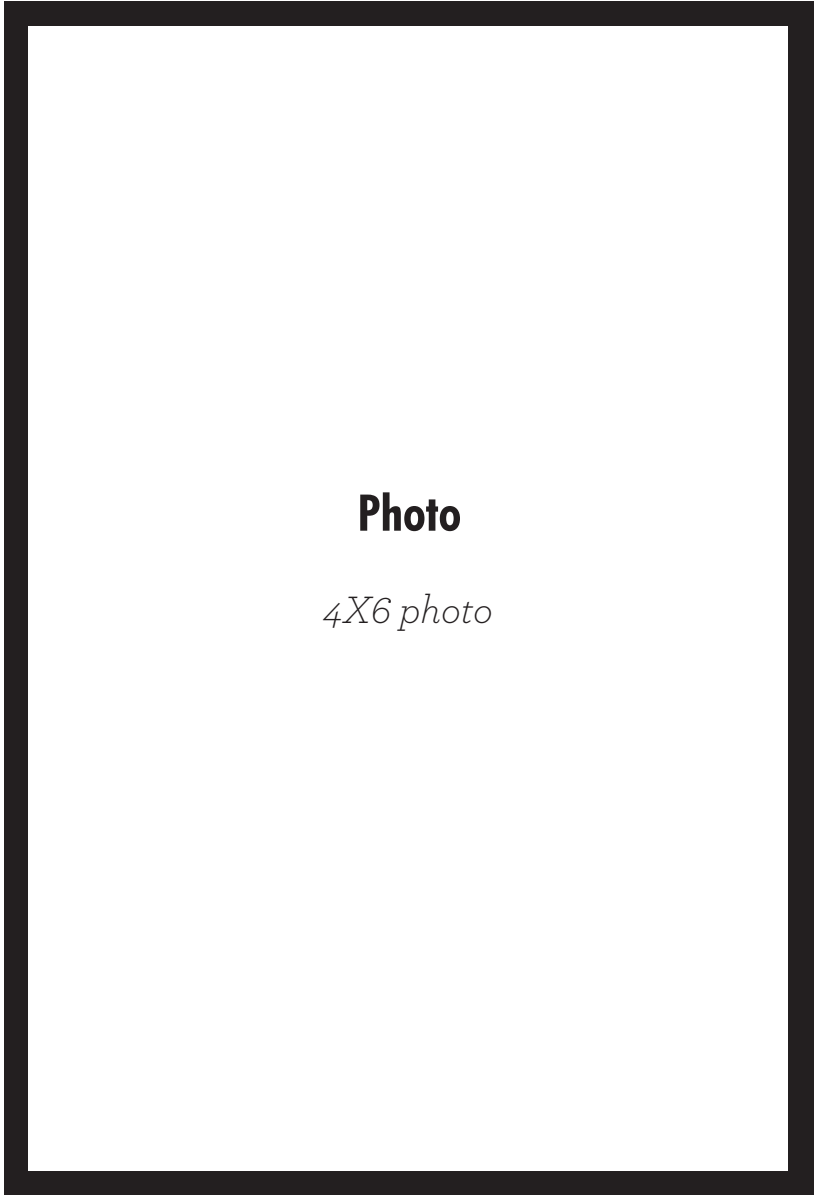
**Favorite Mary Kay Products**

---

---

---

---



## Get this look

Spun Silk Mineral Eye Color

Amber Blaze Mineral Eye Color

Cinnabar Mineral Eye Color

Golden Copper Mineral Cheek Color:

Bronzed Crème Lipstick

**Optional Additions:** Cappuccino lip liner and  
Café au Lait lip gloss, Deep Brown eyeliner



## Color 101 Portfolio - Information Sheet

Customer Name	Phone	Email	Appointment Date	Color Preferences
1.				
2.				
3.				
4.				
5.				
6.				
7.				
8.				
9.				
10.				
11.				
12.				
13.				
14.				
15.				
16.				
17.				
18.				
19.				
20.				
21.				
22.				
23.				
24.				
25.				